

## PEST CONTROL

### BIONEEM PC230 \$19.00/16 OUNCES



A broad spectrum control. Active ingredient is Azadirachtin, made from seeds of Neem trees. Bioneem interrupts insects' growth cycle causing death. Controls 30 common pests including grasshoppers, whiteflies, mealybugs, caterpillars, aphids and webworms. Low toxicity rating. No known insect resistance since it was developed 12 years ago. Harmful to ladybugs.

Also try: Monterey Beetle Insect Spray, Entrust, Burnout II and more.

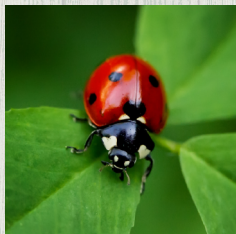
### DIATOMACEOUS EARTH PC137 \$13.00/4 LBS

For soft-bodied pests. Finely milled fossilized shells of fresh water diatoms that kill soft bodied insects such as aphids, cutworms, root maggots and the like by causing dehydration. Causes earthworms to vacate treated area for a while and kill beneficial nematodes. Can be applied in furrows along with seed, liberally spread around the roots and stems of affected plants, dusted on the leaves or mixed with water and sprayed.

Also try: Pure Neem Oil, Pyrethrum Spray and more.



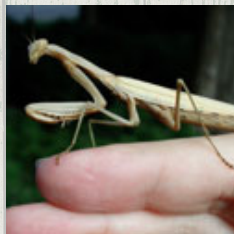
### LADYBUGS BI106 \$37.00/1 PINT



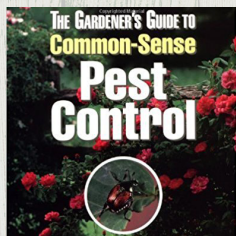
A natural enemy of many pest insects. Ravenous ladybugs arrive in your mailbox ready to eat many times their weight in aphids daily. They can "sleep" in your refrigerator and be released over a 30 day period. Instructions included. Shipped to you when the bugs swarm in California, usually at the end of May unless otherwise requested. Be patient, the ladybug migration isn't always on schedule. Covers 2500 sq ft. Includes shipping.

### PRAYING MANTIS BI112 \$20.50/3 EGG CASES

It is fascinating to see thousands of these tiny predators hatch from their egg cases. They start out eating aphids and move on to anything smaller than they are, beneficial or not. Good for greenhouses, not winter hardy. Fun for children. Includes shipping.



### COMMON SENSE PEST CONTROL BK566 \$19.95



This important resource gives homeowners hundreds of environmentally effective ways to control garden pests. Here are all the no to low toxicity remedies for ridding lawns, gardens and trees of destructive invaders.

### FLY PARASITES BI217 \$47.50/15,000 PARASITES

This minute fly deposits eggs in the pupae of the pest fly and the larvae consume them from the inside. Although developed for dairy and farm use, our customers report effective control of house flies in log cabins. Because Pest flies reproduce faster and flies come in from elsewhere so we recommend releasing fly parasites in small amounts throughout the season.

The suggested number of parasites per animal are: Large animal, 500; Medium animal, 250; Small animal (birds, rabbits), 5; Manure/compost piles, 5 per cubic foot. Includes shipping.

