



Market Grower's Catalog

Organic Farm Direct



Garlic
Seed Potatoes
Vegetable Seeds

Non-GMO
Family Owned
Established 1989



Orphanages in Mexico teach children the value of gardening.

ABOUT US: Irish Eyes Garden Seeds is a small, family owned organic farm. Established in 1989, we are located just east of the Cascade Mountains in Ellensburg, WA. We have over 300 acres of produce that we grow throughout the Kittitas Valley. We are strongly against GMOs in all forms and offer a wide range of potatoes and garden seeds.

GO GREEN: On the farm we use drip irrigation and water saving sprinklers, which helps us use only half our allotted water each year while the remaining water is donated back to the Yakima River. When packing our product we use recycled boxes from local businesses. Our goal is to provide you with top-notch customer service and quality products.

PRODUCT PROMISE: Each year we donate our leftover seeds to many non-profit organizations around the world. Our donations supply seeds to school education programs, farmers who grow food for the hungry and organizations who will use the seeds to benefit the greater good of the world. We are so thankful that we are able to give back and help those who truly need it.

WHY CHOOSE IRISH EYES GARDEN SEEDS?

- Strict Non-GMO policy
- Family owned & operated
- Short season seeds for an early harvest
- High quality seeds
- Exclusive potato varieties
- Fall shipping for Southern growers
- Temperature controlled trucks available for winter shipping
- Ability for customer to pre-arrange shipping
- Competitive shipping rates

SHIPPING

PRODUCT	SHIP DATES	RESTRICTIONS
Hardneck Garlic	Mid-September - November	Only available for fall purchase
Softneck Garlic	Mid-September - April 1st	Weather Permitting
Shallots	Mid-September - April 1st	Weather Permitting
Onion Sets*	Mid-September - April 1st	Weather Permitting
Potatoes & Fingerlings	Mid-October - July	Weather Permitting
Strawberries	April ONLY	Orders must be placed by February 1st
Asparagus	February ONLY	Orders must be placed by December 1st
Onion Transplants	January - April 15th	No Restrictions
Seed & Cover Crops	Year Round	No Restrictions

*Last available ship dates: Red - March 1st, White - March 15th, Yellow - April 1st

NOT AN IRISH EYES GARDEN SEEDS CUSTOMER?

- Email marketgrower@irisheyesgardenseeds.com to request an application
- Or fill out the application on page 4 and mail to: 5045 Robinson Canyon Rd, Ellensburg, WA 98926

Irish Eyes pre-nuclear potatoes in one of our greenhouses



FREQUENTLY ASKED QUESTIONS

How much seed is in one pound?

These are all approximations:

5 tubers per pound; 80 onion bulbs per pound; 12 heads garlic per pound

I live in the south and can plant in January, when can I get my perishables shipped to me?

We begin harvesting our product in the fall (October-November). We highly recommend you have your order shipped immediately after we harvest. You can store your product and plant when it is convenient. Our coldest months are January and February and the mountain passes make it difficult to ship in the winter.

How do I receive price breaks?

Price breaks are explained by product throughout the catalog. For example: to receive the price break for potatoes, you must order 100 pounds of one variety to qualify. After that requirement is met, you may order in increments of 50 pounds.

What classifies a Market Grower?

You must plant the seed purchased from Irish Eyes Garden Seeds. The harvest must either be sold to restaurants or at Farmer's Markets or sold as seed starts.

I'm not a Market Grower. What other programs do you offer?

If you do not meet the purchasing requirements, you will qualify as a retail customer.

If you have a garden center or other store front to sell Irish Eyes products (unaltered), please contact wholesale@irisheyesgardenseeds.com to see if you qualify for a wholesale account.

What will freight cost me?

Unfortunately, we are unable to quote freight prior to your order shipping as the rates vary by weight and location. If your order is under 200 pounds, it will ship UPS. Anything over 200 pounds will ship on a pallet. You will need to notify us if you need a lift gate.

TABLE OF CONTENTS



NEW!!
Harvesting Aprons

Apparel: pages 28-29
Application: page 4
Asparagus: page 23
Books: page 25
Fertilizer: pages 20, 25
Fir Bark Dust: page 19
Garlic: pages 20-21
Garden Seeds: pages 30-36
How Much Seed Do You Need? page 7
Onions: pages 22-23
 Onion Sets (bulbs): page 22
 Onion Transplants (starts): page 23
Order Form: page 5
Packaging Supplies: page 24
Potatoes & Fingerlings: pages 10-19
 Early: pages 10-12
 Mid: pages 12-15
 Late: pages 15-16
 Fingerlings: pages 17-19
 Potato Pricing: page 19
Quick Reference Potato Guide: page 8-9
Seed Starting Supplies: page 28
Shallots: page 22
Strawberries: page 23
Storage Information: page 6
Tools: pages 19, 26-27

THE NEW ROO & JOEY APRONS! SEE PAGE 29 FOR DETAILS

IRISH EYES GARDEN SEEDS MARKET GROWER APPLICATION

BUSINESS:

CONTACT NAME:

SHIPPING ADDRESS:

TITLE:

CITY:

STATE:

ZIP:

PHONE:

EMAIL:

TAX ID #:

HOW DID YOU HEAR ABOUT US?

QUALIFICATION: A market grower is a person who purchases our product, replants it and either re-sells plant starts or profits from the harvested crop. There are minimum order quantities and increments that must be met to qualify for the market grower discounted pricing. Only select varieties are sold at market grower pricing.

ORDERING: Irish Eyes must have a completed copy of this market grower application on file to place orders using the discounted prices. We require hard copies of all orders. Please send orders via email, fax or mail. Phone orders will not be accepted.

FULFILLMENT: As you know, farming is dependent on the weather and many uncontrollable factors that may impact our harvest, storage and shipping. Unfortunately we do occasionally lose product and have to postpone shipping dates during these instances and we greatly appreciate your understanding and cooperation. For southern growers, we highly suggest receiving your orders in November and December when it is still warm enough for us to ship with less risk.

PAYMENT: Full payment must be made at the time of placing the order to allocate stock for the order. Should payment be delayed, the customer runs the risk of having varieties sell out or become unavailable. There are no payment terms for market growers at this time.

CANCELLATION: When a bulk order is placed, fulfilled, completely packaged and moved into cold storage until the appropriate ship date; and then the customer cancels the order, the customer will only be refunded 75% of the purchase price and Irish Eyes will retain the remaining 25% as a fee for labor and packaging material loss.

REFUNDS: Per Irish Eyes Garden Seeds product satisfaction guarantee, if you are unsatisfied with the product we will replace or refund the customer within 1 year of the purchase date. The refund will be for the purchase price of the product only. Irish Eyes will not refund the customer for shipping fees.

I hereby have read, understand and accept the above criteria Irish Eyes Garden Seeds has for market growers. It will be my responsibility to notify Irish Eyes about any changes to account information.

PRINTED NAME

SIGNATURE

DATE

OFFICE USE ONLY

Date Received:

Reviewer Initials:

Customer #:

ORDER# MARKET GROWER ORDER FORM

BUSINESS:

CONTACT NAME:

SHIPPING ADDRESS:

TITLE:

CITY:

STATE:

ZIP:

PHONE:

EMAIL:

CONTACT NAME:

PO# NOTES:

ORDERING: Price breaks are given per category - fingerlings cannot be combined with seed potatoes for price breaks, while Elephant garlic cannot be combined with standard garlic for price breaks. Orders will be accepted via email, fax or mail. A **written copy** of your order must be on file - please **no phone orders**. A shipping form is required for any requested ship dates between November 1st and April 1st. Please email for form. **Payment is due when order is placed**. Please call or email with any questions.

QUANTITY	ITEM #	PRODUCT NAME

ALL SECTIONS ON THIS ORDER FORM MUST BE COMPLETED

Please fill out in full or check box if paying by check.

Exp. Date: _____

CVV: _____

Or check box to pay by check - Order must be paid in full prior to shipping.

☐

Requested ship date (Circle): Early (1-10), Mid (11-20) or Late (21-31) Month:_____

If your order is over 200# please note if you need a truck with a lift gate (Circle): Yes/No

NO SHIP DATE IS GUARANTEED - We strive to send orders in a timely manner

ALL PRICING AND AVAILABILITY SUBJECT TO CHANGE WITHOUT NOTICE

STORAGE INFORMATION

POTATOES: Store in a cool, dark place with good ventilation. The ideal temperature is 35°F-40°F. Humidity is good for potatoes; if it is too dry they will dry out. DO NOT store in refrigerators or airtight containers. Florescent lights will make potatoes turn green. Some chitting is good.

GARLIC: Store in a cool place away from sunlight. Garlic needs to breathe, so keep it in a ventilated place. DO NOT store in refrigerators.

ONION SETS & SHALLOTS: Store bulbs in a cool, dry place. Too much humidity will cause them to mold. DO NOT store next to potatoes as this will make your potatoes sprout quicker.

ONION TRANSPLANTS: If you are storing for an extended period of time, unbundle transplants and lay out in a cool, dry, dark place. Brown or dry looking onions are still fine to plant.

STRAWBERRY ROOTS: Store in a cool, dark place. You may mist the roots if they appear to be drying out. Keep them in a ventilated area.

ASPARAGUS ROOTS: Roots need to be stored in a cool, dry, dark place with plenty of ventilation. Moisture will damage the roots and cause them to mold.



***Disclaimer

We use recycled boxes here at Irish Eyes. Please check all boxes you receive from us as they may show up in a French fry box! Do not put these in the freezer. Be sure to double check your order confirmations. Unfortunately, we do sometimes make mistakes. If we have input your order incorrectly, please let us know immediately! We will not be held liable for any orders that are not checked. Check all product upon receiving your order. You will have 5 days from the time you receive your order to notify us in writing of any errors. If the product has been damaged, pictures are required.

The rights of certain potato varieties are owned by individual or company breeders. All growers must pay a royalty that only pertains to certain patented varieties. All royalties go directly to the breeders to help support their programs. Added charges will be applied to these varieties. Irish Eyes Garden Seeds will cover half the royalty costs on certain items.

A \$5.00 royalty will be added per 100lbs. to the following: Agata, Amarillo Moon, Blue Belle, Cecile, Cheshire, Ciklamen, Elfe, Jelly, Jester, Malou, Pioneer Russet, Red Sonia, Valery and Vermillion. Royalty fees apply to any quantity ordered. IEGB is splitting the original \$10.00 cost with our customers.

A \$3.00 royalty will be added per 100lbs. to the following: Purple Majesty. Royalty fees apply to any quantity ordered.

A \$2.50 royalty will be added per 100lbs. to the following: Ama Rosa, Defender, Huckleberry Gold, Terra Rosa, Yukon Gem and Yukon Nugget. Royalty fees apply to any quantity ordered.

HOW MUCH SEED DO YOU NEED?

	100' ROW	AMOUNT PER ACRE	APPROX. YIELDS PER 100' ROW
Artichokes	4 G	5 OZ	35+ HEADS
Asparagus	120 SEEDS	3600 PLANTS	400+ SPEARS
Beans, Bush (Snap)	1/2-1 LB	60-80 LB	80 LB
Beans, Bush (Dry)	1/2-1 LB	50-90 LB	8 LB
Beans, Pole	3/4 LB	40-60 LB	150 LB
Beans, Edamame	1/2 LB	60-80 LB	20 LB
Beans, Fava	1-1 1/2 LB	130-180 LB	20 LB
Beans, Lima	1-1 1/2 LB	50-80 LB	12 LB
Beets	1 OZ	8-12 LB	100 LB
Broccoli	4 G	1-2 LB	75 LB
Brussels Sprouts	2 1/2 G	1-2 LB	60 LB
Cabbage	4 G	1-2 LB	60 HEADS
Carrots	1/2 OZ	2-4 LB	100 LB
Cauliflower	2 G	1-2 LB	60 HEADS
Celery	1/4 OZ	1/4 LB	100 HEADS
Collards	4 G	1-2 LB	50 LB
Corn	2-3 OZ	10-20 LB	8 DOZEN EARS
Corn, Popcorn	2 OZ	10-15 LB	10-15 LB
Cucumbers	1 OZ	2-3 LB	120 LB
Eggplant	2 G	7 OZ	50 LB
Fingerlings	5-6 LB	1,000 LB	15,000 LB
Kale	5 G	2-3 LB	75 LB
Kohlrabi	1/2 OZ	2-3 LB	50 LB
Leeks	1/4 OZ	4 LB	150 STALKS
Lettuce	4 G	1/2-1 LB	50 LB
Melons	3 G	2 LB	50-100 LB
Mustard	1/4 OZ	4 LB	100 LB
Okra	1 1/2 OZ	12 LB	300+ PODS
Onions	1/2 LB	5-6 LB	100 LB
Parsnips	1 OZ	3-4 LB	75 LB
Peas	1-1 1/2 LB	100-105 LB	20 LB
Peppers	2 G	1-2 OZ	50 LB
Potatoes	10-12 LB	2,000 LB	24,500 LB
Pumpkins	1 OZ	3 LB	300 LB
Radish	1 OZ	10-20 LB	200 ROOTS
Rutabaga	1/4 OZ	1/2 LB	150 LB
Shallots	1/4 OZ	3-5 LB	25-50 LB
Spinach	1/2 OZ	10-12 LB	40 LB
Squash, Summer	1 OZ	3-4 LB	200 LB
Squash, Winter	1 OZ	2-3 LB	200 LB
Swiss Chard	1/2 OZ	6 LB	40 LB
Turnips	1/4 OZ	1-2 LB	40 LB
Tomatoes	2 G	1-1 1/2 oz	150 LB
Watermelons	3 G	1-3 LB	50-100 LB

Scarlet Runner Bean



Big Rainbow Tomato



Albion Strawberries, see page 23



QUICK REFERENCE POTATO GUIDE

	SKIN COLOR		FLESH COLOR		MATURITY	EYES	SHAPE	SIZE	STORAGE	HEAT TOLERANCE	HEIRLOOM	HIGH YIELDING	DISEASE RESISTANCE	CULINARY USES
Agata	Y	Y	M	S	Ov	M				✓		TB, PW	R, Ba, B	
All Blue	B	B	L	S	L	M	✓	✓	✓	✓			S, B, M	
All Red	Red	Red	M	S	O	M-XL		✓	✓	✓			St, B, S	
Amarillo Moon	Y	Y	E	S	R	S	✓			✓			Ba, B, M, S	
Ama Rosa	Red	Red	L	S	O	S	✓			✓			Ba, R, G, F	
Atlantic	W	W	M	D	R	M	✓	✓		✓		LB, S	B, M	
Austrian Crescent	T	Y	XL	S	F	L	✓	✓	✓	✓			S, B, St	
Blue Belle	Y/P	Y	E	S	Ov		✓			✓		PS, SP, SS	R, B, Ba, M	
Butte	R	W	L	S	O	L	✓	✓		✓		S	B, F	
Butterfinger	T	Y	XL	S	F			✓	✓	✓			St, B, S	
Cal White	W	W	E	S	R	L	✓	✓		✓			ALL	
Caribe	L	W	E	S	O	L		✓	✓	✓		S, SR	B, St, M, F	
Cecile	R	Y	XL	S	F	L		✓		✓		S	R, B, St	
Cherry Red	Red	W	E	S	O	S-M	✓	✓		✓			S, St, B	
Cheshire	Red/Y	Y	E	M	R					✓			R, St, Ba	
Chieftain	R	W	M	S	Ov	M	✓	✓		✓		S, LB	Ba, St, M	
Ciklamen	R	W	M	S	Ov	M	✓			✓		PVY, BL, S		
Clavella	Red/W	W	M	D	Ov	L								
Dark Red Norland	Red	W	M	S	O	M	✓	✓	✓	✓			S, F	
Defender	R	W	L	S	O		✓	✓		✓		B	Ba, F, M	
Desiree	Pi	Y	L	M	Ov			✓		✓		PS	ALL	
Elfe	Y	Y	E	S	Ov		✓	✓				S, B, BL	R, M, Ba	
French Fingerling	Red	Y	XL	S	F	M-L	✓	✓	✓	✓			F, R	
German Butterball	Y	Y	M	S	O	S-M		✓		✓			ALL	
Huckleberry	Red	Red	M	S	O	M-L				✓			Ba, M, F	
Huckleberry Gold	P	Y	M	M	R	S-M	✓	✓		✓		S, VW	Ba, B, F	
Jelly	Y	Y	L	M	Ov	M	✓	✓		✓		S, PVY, RH	ALL	
Jester	P/Y	P/Y	E	M	R	S	✓			✓			S, R	
Kennebec	W	W	M	S	O	L	✓		✓	✓		B, M, NN	Ba, F, M	
Magic Molly	P	P	L	S	O	L	✓	✓		✓		S	R, B, Ba, F	
Makah Ozette	W	W	XL	D	F	S	✓	✓	✓	✓			R, Ba	
Malou	Y	Y	M	S	R	M	✓	✓		✓		PVY, BL, TB, RH	R, Ba, F, B	
Pioneer Russet	R	W	M	S	Ov	M-L	✓	✓		✓		S	R, F, Ba, M	
Princess La Ratte	Y	Y	XL	S	F	M	✓	✓		✓		S, LB	Ba, R, St	
Purple Majesty	P	P	M	S	O	M		✓		✓		FDR, B	Ba, S, R, F	
Purple Peruvian	P	P	XL	M	F	M-L		✓		✓			St, F, Ba, R	
Red La Soda	Red	W	M	D	R	M	✓	✓	✓	✓			B, S	

QUICK REFERENCE POTATO GUIDE

	SKIN COLOR		FLESH COLOR		MATURITY	EYES	SHAPE	SIZE	STORAGE	HEAT TOLERANCE	HEIRLOOM	HIGH YIELDING	DISEASE RESISTANCE	CULINARY USES
Red Norland	Red	W	E	S	O	M-L	✓	✓	✓	✓			S, F	
Red Pontiac	Red	W	M	D	R	L	✓	✓	✓	✓			M, B	
Red Sonia	Red	Y	E	S	O	L	✓	✓		✓		S	R, M, Ba, B	
Red Thumb	Red	Pink	XL	S	F	S		✓		✓		PS, GN	ALL	
Rose Finn Apple	Pi	Y	XL	M	F	M		✓	✓	✓			S, R	
Russet Burbank	R	W	M	S	Ov	L	✓	✓	✓	✓		S	Ba, F, B	
Russian Banana	Y	Y	XL	S	F	M	✓	✓		✓		S, LB	ALL	
Sangre	Red	W	M	S	O	S-M	✓	✓		✓			B, Ba, M	
Smiling Rose	Pink	Y	M	D	O	M-L		✓		✓			R, St, B	
Terra Rosa	Red	R	XL	S	F	L	✓	✓		✓			F, Ba, M	
Valery	Red	Y	M	S	Ov	S-M	✓			✓		S, TB, FB	S	
Vermillion	Red	Red	XL	S	F	M	✓	✓		✓		SP, S	ALL	
Viking Purple	P	W	E	S	Ov	XL	✓	✓	✓	✓			B, St, M	
Warba "Pink Eye"	T/Pi	W	E	M	Ov	M	✓	✓	✓	✓		S	St, B	
Yellow Finn	Y	Y	L	M	O	M	✓	✓	✓	✓			B, Ba, D	
Yukon Gem	Y/Pi	Y	M	S	Ov	S-M	✓	✓		✓		B	ALL	
Yukon Gold	Y/Pi	Y	E	S	R	L	✓	✓					Ba, B, S	
Yukon Nugget	Y	Y	E	S	R	S	✓	✓					R, S	

SKIN/FLESH COLOR

B = Blue R = Russet
 L = Lavender T = Tan
 P = Purple W = White
 Pi = Pink Y = Yellow

MATURITY

E = Early (65+ Days)
 M = Mid (80+ Days)
 L = Late (100+ Days)
 XL = Extra Late (120+ Days)

EYES

S = Shallow
 M = Medium
 D = Deep

SHAPE

F = Fingerling Ov = Oval
 L = Long R = Round
 O = Oblong

DISEASE CODES

FB = Foliar Blight PS = Powdery Scurf VW = Verticillium wilt
 FDR = Fusarium Dry Rot SP = Splitting M = Mosaic
 LB = Late blight SS = Silver scurf RH = Rhizoctonia
 S = Scab SR = Storage rot NN = Net necrosis
 PVY = Potato Virus Y BL = Blackleg GN = Golden Nematode
 TB = Tuber blight B = Blight PW = Potato Wart

CULINARY USES

S = Salad F = Fry
 B = Boil R = Roast
 M = Mash ALL = Multi-purpose
 St = Steam G = Grill
 Ba = Bake



Irish Eyes Exclusive Product



Heirloom dating back 50 years or more

EARLY SEASON 65+ DAY MATURITY - NOVELTY



OEA401 - Caribe

A large, uniform tuber with snow white flesh and lavender skin. Good boiled, steamed or mashed. It should be eaten first as it does not last in storage. Resistant to heat, drought, scab and storage rot. Producing excellent yields, it can be grown almost anywhere.



OEA100 - Cheshire

A high yielding, early season tuber. Dark red skinned with yellow around the eyes and deep yellow flesh. This potato is best when roasted, steamed or baked. Eat this tasty tuber first as it does not have a long shelf life.



OEA103 - Jester

An early season tuber. Purple skin with yellow around the eyes and variegated purple and yellow flesh. Produces small round tubers that are perfect for the home gardener. Good for salads or roasting. Sensitive to common scab.



OEA104 - Red Sonia

A very early season tuber with an attractive red skin color and yellow flesh. Great for roasting, mashing, boiling or baking. A high yielding and good storage potato. Resistant to common scab.



OEA381 - Viking Purple

These beautiful potatoes have smooth dark purple skin with violet splashes and pure snow white flesh. They are great for mashing with excellent flavor. These very early potatoes store well and are drought-resistant. This high yielding potato was developed at North Dakota State University in 1962.

5 TIPS

For Selling Your Potatoes

1) *Sell new potatoes*

These are the first non-cured potatoes you dig. Be gentle when washing them, as they are easy to bruise or scratch. To display, fill clamshells, set them on your market table and watch them fly! Be sure to market them as "New Potatoes," as it is more alluring to foodies.

2) *Sell them packaged*

People lean towards pre-packaged foods. Having cured potatoes in some kind of container is a great way for customers to see your selection. This catches their eye and allows for more potential sales.

3) *Sell in bulk*

The advantage is that piles of potatoes make your table look bountiful, which itself can have a positive effect on sales. A simple way to sell potatoes is by selling in bulk. It allows the customers to choose how much they want. Just weigh and have a set price per pound.

4) *Sell specialty to chefs*

Restaurants buy sacks of Yukon gold potatoes for near pennies, and there is no reason for you to try to compete with that. Instead, consider growing fingerling, unique and heirloom potatoes and marketing those to the chefs as specialty or seasonal items. These crops are high yielding, have more resistance to disease, and chefs look for them, so you have reason to fill that demand and earn money in the process.

5) *Variety is key!*

Take advantage of as many varieties as possible – this means growing both early and late season potatoes, thus extending your harvest. You can harvest the earliest after 65 days for summer sales and the later seasons all fall and winter sales!

EARLY SEASON 65+ DAY MATURITY - RED



OEA302 - Cherry Red

Cherry Red produces small to medium sized tubers with bright medium to dark red skin and attractive white flesh. This one is always a good producer and a heavy setter, leaving a nest of tightly clustered potatoes.



OEA371 - Red Norland

Produces high yields of medium to large tubers with smooth, thin, red skin and shallow eyes, white flesh and great flavor. Good storage with moderate resistance to scab. Developed at North Dakota State University for northern climates.

EARLY SEASON 65+ DAY MATURITY - WHITE



OEA107 - Cal White


Cal White is a long, white fleshed potato with white skin. It produces heavy yields of large potatoes. In fact Cal White surprised many people by setting new records for potato yields in California tests. If you like white bakers this is the one.

OEA231 - Warba "Pink Eye"


Warba produces high yields of uniform oval tubers with very smooth golden skin and white flesh. The "Pink Eye" nickname derives from the pinkish-red splashes around the eyes of the tuber. These potatoes have a delicious flavor steamed, boiled or fried. They are great for storage and are scab-resistant. Excellent for growing in short season areas.



EARLY SEASON 65+ DAY MATURITY - YELLOW

OEA113 - Amarillo Moon 

This very high yielding tuber has excellent flavor. Amarillo Moon produces small sized, uniform round tubers. Flavor is enhanced when baked, boiled or mashed.

OEA102 - Elfe 

Early season oval shaped tubers with bright yellow skin and medium yellow flesh. Smooth shallow eyes and nice uniform tubers. Good for roasting, steaming, baking and boiling. Excellent for storage. Drought tolerant and resistant to common scab, blight & black leg.



OEA252

OEA251 - Yukon Gold

This round tuber has smooth, thin yellow skin with pink coloring around shallow eyes and yellow flesh. It provides excellent flavor when baked, boiled or made into salads or fries but is too moist for hash browns. This best-selling early variety is drought-tolerant and has moderate storage capabilities.



OEA251

OEA252 - Yukon Nugget

An early season tuber that produces uniform, round tubers with yellow skin and small red eyes. This is a great substitution for Yukon Gold. While smaller in size, it produces more tubers per plant resulting in higher yields than its cousin. Perfect for all your culinary needs! Yukon Nugget has resistance to scab.

MID SEASON 80+ DAY MATURITY - Russet



OMD241 - Russet Burbank

This long, oval russet tastes great baked, fried or boiled. This long storing and scab resistant potato needs a consistent moisture supply. Most widely grown potato in the United States, originating from Luther Burbank's early plant breeding. This is the potato that made Idaho famous!

OMD102 - Pioneer Russet 

An all-purpose cooking potato; mash, fry, bake, the works! Produces moderate yields of uniform tubers. Resistant to common scab.

MID SEASON 80+ DAY MATURITY - NOVELTY



OMD402 - Huckleberry Gold

Huckleberry Gold produces round to oval small to medium sized tubers with purple skin and yellow flesh. Resistant to common scab and verticillium wilt.

OMD100 - Blue Belle 

A beautiful oval potato with yellow skin and purple splashes around the eyes and medium yellow flesh. Resistant to powdery scab, splitting and silver scurf. Moderate storage.




OMD403 - Huckleberry

Maroon-beet red skin color and dark pink flesh with white marbling. This oblong shaped potato consistently produces vigorous medium to large tubers. Named after the legendary wild huckleberry of the Northern Rockies.



OMD201 - All Red

These medium to extra-large tubers have smooth, brilliant red skin with medium shallow eyes and pink swirled flesh that retains its color after cooking. Like most reds, this variety is good for steaming or boiling and makes an attractive and unusual potato salad.

OMD105 - Valery 

A long, oval potato with smooth red skin and deep yellow flesh. There are multiple uses for this potato from boiling to roasting, to grilling and mashing. High yielding and good storage. Has medium to high resistance to common scab, tuber blight and foliar blight.



OMD283 - Purple Majesty

An oblong, mid season potato with smooth dark purple skin. Almost solid purple inside unlike All Blue. Very good table quality.



OMD107 - Clavella

Mid season, large oval, South American variety with mottled red and white skin, deep white eyes and white flesh.

MID SEASON 80+ DAY MATURITY - YELLOW



OMD103 - German butterball

Order this extremely popular potato early! Smooth, thick, golden and netted skin with butter yellow flesh are characteristics of this small to medium oblong tuber with outstanding taste. Great for hash browns, fries, steaming or baking.

Up Your Sales

By Extending Your Harvest

You will have several benefits by planting early, mid and late season potatoes.

Let's clear up the confusion! All potato varieties, whether early, mid, or late season should be planted at the same time (be it February or May). Check with your local extension service if you are unsure of your planting zone.

Early season potatoes will be producing just seven or eight weeks after planting! These average a 65+ day maturity time resulting in an earlier harvest than your other varieties. Start selling these in the summer while your later season varieties mature. Early potatoes often set tubers once and quit so be sure to plant a mid or late season with them.

The main crop should be a mid or late season variety. These do take longer to mature, but give you higher yields because they set tubers throughout the whole season. Late season potatoes are going to allow you to sell potatoes until the next spring, because they are often much better for winter storage. Storage time correlates with the natural dormancy period of the tubers.

By planting early, mid and late season potatoes, you will prolong your harvest, therefore upping your sales by having an array of potatoes to sell all summer and fall.



OMD117 - Agata

Beautiful yellow skin and yellow flesh with a creamy texture when cooked. Exceptionally high yields of oval tubers. Early to mid-season maturity and moderate storage. Try this tasty tuber roasted, baked or boiled.



OMD121 - Malou

This early to mid-season potato produces high yields of uniform, round tubers with bright yellow skin and yellow flesh. Has a delicious creamy texture when roasted, baked, fried or boiled. Resistance to PVY, black leg, tuber blight and rhizoctonia. A great storage potato.



OMD255 - Yukon Gem

First potato that is blight resistant. This outstanding variety was bred from Yukon Gold using traditional plant breeding. Round to oval, light yellow skin with pink splashes around the eyes. Much higher yields than Yukon Gold and every bit as good.

MID SEASON 80+ DAY MATURITY - RED

OMD101 - Ciklamen

A mid to late season tuber. Produces uniform, oval shaped tubers with red skin and creamy white flesh. High yielding. Good storage. Resistant to PVY, blackleg and common scab.



OMD101

OMD311 - Dark Red Norland

This potato has deep red, almost burgundy skin with shallow eyes and white flesh. It makes excellent potato salad, keeps well, has good disease resistance and moderate scab resistance. This old favorite is high yielding.



OMD311

OMD471 - Sangre

Round to oblong tubers that maintain their red color for a long time in storage. Especially useful for harvesting lots of new, early small potatoes. Excellent variety for market growers!



OMD471

OMD303 - Chieftain

A high yielding smooth red skinned slightly oval tuber with shallow eyes and white flesh, medium size and very good flavor. This variety is resistant to scab and late blight and does better in clay soils than most other reds.

OMD501 - Red Pontiac

This large round potato has thin, dark-red skin, deep eyes, and crisp white flesh. Excellent for mashed potatoes and boiling but not for baking. Heat-tolerant, long-storing and high-yielding, it will grow in heavy soil.

OMD181 - Red La Soda

This potato with smooth red skin, deep eyes and white flesh is excellent for boiling and making potato salads. Possibly the best storing red; it keeps well into June. It tolerates high temperatures but is susceptible to disease. Excellent harvests.



OMD181

MID SEASON 80+ DAY MATURITY - WHITE

OMD141 - Kennebec

A short oval potato with smooth pale yellow skin, shallow eyes and white flesh. Can be used for fries, hash browns and many other uses even without peeling. Kennebec, one of the best keepers, is resistant to blight, mosaic, late blight and net necrosis. Produces dependable heavy yields of large potatoes in most soils.



LATE SEASON 90+ DAY MATURITY - YELLOW



OLM100 - Jelly

Smooth yellow skin with yellow flesh. Oval shaped tubers and shallow eye depth. High yielding and an excellent long term storage potato. This tuber has wonderful texture and a tasty, buttery flavor which is great any way you cook it! Resistant to common scab, PVY and rhizoctonia.

OLM431 - Yellow Finn

This potato has an unusual pear shape, deep yellow-tan skin and waxy yellow flesh. A buttery taste that is good boiled, baked, fried or included in soups. This excellent keeper needs the lush, long season of the maritime Northwest to really perform. With consistent moisture, it will continue to yield until frost. This potato is the #1 yellow, our best selling late season variety.

LATE SEASON 90+ DAY MATURITY - NOVELTY



OLM117 - Magic Molly

An Alaskan bred potato variety that produces large fingerling shaped tubers. The dark purple skin and flesh retains its color even when boiled. Its excellent earthy flavor and waxy texture are richly enhanced when barbecued, bringing out the warm woodsy smoke flavor of this delicious tuber. Magic Molly is a late setting and long storing potato that will last gardeners well into spring.



OLM421 - Desiree

Desiree has beautiful rose colored skin with eyes that are easy to peel and creamy-yellow gourmet quality flesh. This long, oval potato has a distinctive flavor and is a good all around cooking potato. While it is disease resistant, it is susceptible to leaf blight. This prolific producer is quite popular in Europe.



OLM511 - All Blue

This beautiful, medium-sized, extra-late potato has deep blue skin as well as consistently blue flesh. This high yielding plant has beautiful blue flowers. The rich taste of these potatoes when mashed is enhanced by the color.

LATE SEASON 90+ DAY MATURITY - RUSSET

OLM560 - Defender

First late blight resistant russet to be released. This late season potato is high yielding, lightly russeted, suitable for frying and is excellent as a fresh market baker. Oblong with white flesh. Stores well.



EXTRA LATE SEASON 100+ DAY MATURITY - FINGERLINGS



OFG110 - Austrian Crescent

Nutty tasting yellow flesh wrapped in a light, thin yellow skin. It tends to have an attractive crescent shape and stays firm when cooked. Has a relatively high starch content for a fingerling.



OFG113 - Ama Rosa

With smooth bright red skin and deep red flesh throughout, these sweet, creamy and nutritious fingerlings are ideal for baking, roasting and grilling. They make intensely colorful potato chips as they retain their sweetness and uniform bright red color.



OFG192 - Princess LaRatte™

A French potato that's the culinary superstar of European haute cuisine. Mildly nutty; reminiscent of chestnuts, hazelnuts and almonds with subtle sweetness!



OFG161 - French Fingerling

This gourmet quality fingerling has smooth red skin and yellow flesh. There is usually a little pink/red ring just under the skin. It produces medium to large tubers.



OFG147 - Terra Rosa

A beautiful new variety which is smooth and shallow eyed. Magenta skin with matching flesh. Potatoes are ideal for frying, baking or mashing. Oblong tubers can reach 10 ounces.



OFG123 - Purple Peruvian

This is the only purple fingerling. The medium to large sized tubers need really rich soil and lots of water to prosper. This is a very popular variety at the farmer's market!

EXTRA LATE SEASON 100+ DAY MATURITY - FINGERLINGS



OFG117 - Butterfinger

Crescent shaped with lightly russeted thin skin and nutty tasting yellow flesh. Very firm when cooked, the pieces hold their shape in potato salads. Relatively high starch for a fingerling.



OFG109 - Makah Ozette

A prolific potato with thin skin, flaky, creamy yellowish flesh and an unusual number of deeply set eyes. This is the one everyone is talking about!



OFG104 - Vermillion

A mid season long, oval tuber with red skin and flesh. Suitable for a wide range of cooking with a creamy texture and beautiful unique color. Resistant to virus, splitting and powdery scab. Moderate storage.



OFG131 - Rose Finn Apple

One of the best tasting fingerlings. It has a rosy-buff skin with deep yellow flesh that is blushed with red. Excellent for potato salad. Produces lots of medium-sized, well-clustered potatoes. Very good roasted over the coals. The tubers are long-keeping and the vines are very vigorous.



OFG183 - Red Thumb

Somewhat new and rather rare with brilliant red skin and reddish pink flesh. Medium to long tubers have very shallow eyes and come out of the ground clean as a whistle. This fingerling is very uniformly shaped and produces prolific yields. Very well suited to the restaurant trade.



OFG155 - Russian Banana

This fingerling, developed in the Baltic region of Northeastern Europe, produces heavy yields of medium sized all purpose tubers. The skin and flesh are both yellow with a firm texture. Excellent resistance to disease and well suited for the restaurant industry.

ORGANIC POTATO AND FINGERLING PRICING

POTATOES	100 LBS	500 LBS	1,000 LBS	2,000 LBS	4,000 LBS	10,000 LBS
100 pounds of a single variety must be ordered to receive discounted pricing. After price break is met, increments of 50 pounds is acceptable. Price breaks are based on the total weight of seed. Fingerlings and potatoes are calculated separately. Pricing is shown per pound. Approximately 5 tubers per pound.						
Organic Potatoes	\$1.25	\$1.05	\$0.95	\$0.80	\$0.75	\$0.65
Organic Fingerlings	\$2.25	\$2.00	\$1.75	\$1.50	\$1.25	\$1.10
Pre-cut Potatoes	Save time by ordering pre-cut potatoes. They will come dusted with fir bark dust and have the option to be sprayed with oxidate and TerraClean. Call or email for pricing.					

Fir Bark Dust

FE340 - \$60.00/50 pounds

Starting Your Seed Potatoes Off Right!

If you received sprouted potato seeds, this is great! If you haven't, no worries - they just need a boost. You must chit your seed potatoes before planting them.

For chitting, the method is simple: spread the seed tubers in open-top crates, boxes or flats, one layer deep with the "seed end" facing up. (If you closely observe a seed potato, you'll notice that one end was attached to the plant, the other end has a larger number of eyes from which the sprouts emerge. This end with the eye cluster is called the seed end.) Keep the flats in a warm place (70 degrees F.) with medium light levels. The warmth stimulates the development of strong sprouts. Do not cut the tubers before they sprout.

Now, that your potatoes have sprouted you are ready to cut up your large potatoes with a clean, sharp knife. As a general rule, the larger the seed piece, the larger the crop both in terms of size of individual potatoes and overall yield. On the other hand, the larger the seed pieces used, the more seed it takes to plant a given area. However, at a minimum, each piece should contain two or more strong eyes.

The secret: dust your newly cut potatoes with Fir Bark Dust; it's a natural fungicide to guard against scab and reduce the threat of infection by bacteria or fungus. Simply give the pieces a light dusting in a bag or bucket. Then allow them to "heal over" for at least 24 hours before planting. Do not put in direct sunlight; avoid shriveling the seed pieces, which will weaken them. Once dusted, treated potatoes may be held up to one week.



EW6500 - Earthway Highwheel Cultivator \$99.00

A multi purpose garden tool that cultivates, plows and cuts furrows. Over the axle frame design lightens handle load and improves operating stability. Handle folds down for easy storage. Comes with three attachments: Furrow plow, moldboard plow and 5-tined cultivator.



HARDNECK GARLIC (AVAILABLE FALL ONLY)



GA102 - German Red

This large bright purple bulb contains 8-12, extra easy-to-peel, round, light brown cloves with some purple at the base. Flavor is strong, hot, and spicy. Keeps moderately well when properly cured and stored. Can be grown in mild climates; However, develops better quality and size where winters are cold. Color will become brighter if it is stressed by too much water.

GA202 - Spanish Roja

Gourmet garlic famous for flavor! Light purple streaks on 7-13 easy-to-peel cloves. Suited to colder climates. May not yield well where winters are too mild. Very popular with market gardeners and restaurants. Brought to the Northwest before 1900; often called "Greek Blue".



CONVENTIONAL GARLIC	25 LBS	50 LBS	100 LBS
Rocambole Group (pricing per pound)	\$7.50	\$7.00	\$6.50

ELEPHANT GARLIC



OEG101 - Elephant Garlic

Four to six enormous cloves in each bulb with a mild garlic-like flavor. The bulbs commonly weigh a pound or more each. The cloves are very easy-peeling. You'd think you have a giant hard-neck here, but the bulbs keep very well, more like a soft-neck. Also a popular and profitable market gardeners' crop in some areas.

ORGANIC GARLIC	25 LBS	50 LBS	100 LBS
Elephant (pricing per pound)	\$8.00	\$8.00	\$8.00

FE350 - Sup'r Green \$5.00/25 pounds

Ground, composted, 100% organic chicken manure. Will provide excellent balanced supply of nutrients to plants. Can also be used for mulch and moisture retention. Non-burning. Five times more plant food than steer manure. Uniform, dry and weed free. OMRI listed for use in organic production. We use this compost in our organic production at a rate of 1000 lb per acre/year.



SOFTNECK GARLIC



OGA502 - Early Italian Purple

The bulb is large and white-skinned with purple stripes and numerous small cloves. This plant is vigorous, and better adapted to summer heat than Italian Late. Widely grown around Gilroy, California, the "garlic capital" of the world.



OGA801 - Inchelium Red

From Inchelium, WA, on the Colville Indian Reservation. Large 3" + bulbs produce 8-20 cloves of good size. Mild, but lasting flavor, with a hint of hot! Dense cloves store well. Flavor can get stronger in storage. This vigorous soft-necked variety won a Rodale taste test of 20 garlic strains - named "Very Best of the Soft-Necks".

ORGANIC GARLIC	25 LBS	50 LBS	100 LBS
Artichoke Group (pricing per pound)	\$8.50	\$8.00	\$7.50
Silverskin Group (pricing per pound)	\$8.50	\$8.00	\$7.50
Pre-Cracked Garlic	Save time by ordering pre-cracked garlic. Call or email for pricing.		



OGA402 - Italian Late

Garlic cloves are generally luscious and round. The light colored skin is extra-tight which makes it better for storage. It can be attractively kept because it's easily braided. This variety matures later than Early Italian Purple and tends to be somewhat smaller than Early Italian Purple as well.



OGA311 - Nootka Rose

This Northwest heirloom garlic from the San Juan Islands in Washington state has a medium to large bulb, 15-24 cloves per bulb which are streaked red on mahogany. Its flavor is strong. In rich soil, these cloves can lose their rosy hue. This garlic is very attractive for braiding.



OGA602 - Silver Rose

Rose-colored cloves in very smooth bright-white bulbs. Beautiful garlic to braid! This is the longest-storing garlic we sell. Like all fast-growing Silverskin garlic, this type is frequently planted in the spring. Very popular in Western and Southern US and in France and Italy. There are 12-15 cloves per head.

More garlic varieties may be available.

Please email marketgrower@irisheyesgardenseeds.com for current availability.

SHALLOTS



OSH302 - Holland Red

Short and flat with a coppery red outer skin that peels easily to reveal a reddish-purple flesh. Excellent flavor; great in sauces. This one can produce tenfold.

OSH102 - Dutch Yellow

Also known as Yellow Multiplier. Round bulbs, durable copper skins and creamy yellow flesh. Uniform in size and excellent keeper. Tender and spicy with a pungent raw flavor that mellows and sweetens but still retains character when cooked. High yielding.



ORGANIC SHALLOTS	25 LBS	50 LBS	100 LBS
Shallots (pricing per pound)	\$6.50	\$6.00	\$5.50

ONION SETS



OOS301 - Red Wethersfield

Large flattened globe with very thin reddish-purple colored skin. White flesh is very firm with pink or purple highlights. Fine, strong flavor. Vigorous.

Last available ship date: March 1st

OOS201 - White Ebenezer

Medium sized, flat onion with thin, translucent white skin with less waste when prepared. Fine grained flesh. Popular for pickling. An excellent storage onion.

Last available ship date: March 15th

OOS101 - Yellow Rock

Flat onions with bronze-yellow skin. Mild and sweet, fast growing scallions.

Last available ship date: April 1st

ORGANIC ONIONS	32 LBS	64 LBS	96 LBS
Onion Sets (pricing per pound)	\$2.50	\$2.50	\$2.50
Approximately 80 bulbs per pound. Only sold in 32 pound bags.			

ONION TRANSPLANTS



ONION TRANSPLANTS	1 BUNDLE	2 BUNDLES	3 BUNDLES	4 BUNDLES	1 CASE
Organic Transplants	\$15.00	\$28.00	\$39.00	\$48.00	\$70.00
Conventional Transplants	-	-	-	-	\$90.00*

Each bundle contains approximately 50 starts. Cannot mix cases.

*Shipping is included in the price for conventional cases only.

Please email marketgrower@irisheyesgardenseeds.com for current availability.

ASPARAGUS & STRAWBERRIES

CODE	PRODUCT	100 ROOTS	500 ROOTS	1,000 ROOTS
AS118R	Jersey Knight Asparagus	\$69.00	\$315.00	\$580.00
AS125R	Purple Passion Asparagus	\$70.00	\$320.00	\$590.00

Asparagus must be ordered by December 1st and will ONLY ship in February.

GS408	13" All Pro Asparagus Cutter	\$14.49		
ST103	Albion Strawberry	\$52.00	\$230.00	\$400.00
ST100	Monterey Strawberry	\$52.00	\$230.00	\$400.00
ST107	San Andreas Strawberry	\$52.00	\$230.00	\$400.00

Strawberries must be ordered by February 1st and will ONLY ship in April.



ST103



AS118R



Left: Grampa and Ryle hard at work harvesting onions in the greenhouse



Right: Planting pre-nuclear potatoes in the greenhouse

PACKAGING SUPPLIES



1lb Clear Clam Shell FMS114		
\$8.40/10 ct	\$15.12/50 ct	\$26.90/100 ct
2lb Clear Clam Shell FMS122		
\$32.80/10 ct	\$59.04/50 ct	\$104.96/100 ct
3lb Clear Clam Shell FMS112		
\$34.00/10 ct	\$61.20/50 ct	\$108.80/100 ct
4lb Clear Clam Shell FMS121		
\$41.00/10 ct	\$73.80/50 ct	\$131.20/100 ct

NB503 - Small Mesh Bags 6"x10" 100/\$15.00

NR401 - Netted Rope 25'/\$5.00
Expands up to 10" in diameter.BL101 - Burlap Sacks \$17.00
Each sack holds roughly 50 pounds. 10 count.20lb White Cardboard Lug Box PCAL420
\$32.40/10 ct \$58.32/50 ct \$103.68/100 ct28lb Kraft Cardboard Lug Box PCAL1440
\$32.40/10 ct \$58.32/50 ct \$103.68/100 ct
Ships flat - easy to assemble

BOOKS



A BK951- Onions and Garlic Forever \$14.95

One of the most complete books on edible alliums. 114 pages of descriptions, history and growing info from an avid allium gardener and his experiences.

C BK431 - Root Cellaring \$16.95

The problem with growing potatoes is not in growing them. The problem is keeping them in good condition from harvest time until the next crop of the earliest new potatoes.



B BK505 - Integrated Pest Management for Potatoes in the Western Region \$36.00

The definitive textbook for potato growers. IPM means managing the crop and soil to avoid problems before they start. Contains many color photographs showing the effects of diseases and identifying insects.

FERTILIZER & SOIL AMENDERS

CH100 - ProGibb 40 PGR \$72.00

For market gardeners and commercial farmers to kick start the growing season. This is a powerful growth hormone that is naturally occurring. Promotes vigorous growth, helps your crops grow larger and reach maturity earlier. One jar contains 160 grams of concentrated water soluble ProGibb. Must be used according to instructions included. 1/8 to 1 1/2 jars for 1 acre. Applied as a spray when diluted. This product will store for many years.

FE152 - Nutri-Rich Fertilizer \$16.50/25 pounds

100% natural organic fertilizer, OMRI listed, contains no synthetic ingredients. Offers the most natural source of essential nutrients to promote vigorous plant growth, bountiful yields and brilliant flowering. Used as directed, will not impact or harm ground water or other sensitive ecosystems. In fact, regular use will not only build up and enrich soil but also benefit the plant and soil biosphere. Gradual and steady release. Exceptional quality, consistency and ease of use. Great for lawns, garden vegetables, flower and shrubs. Available as pellets suitable for a spin spreader.

IN101 - Nitrogen-Fixing Inoculant \$12.50/2.3 ounces

For legumes: Peas, beans and green manure crops. Contains beneficial bacteria which transfers nitrogen from the air to the roots. Improves overall plant vigor, increasing yields. Treats 8lbs of seed.

HOSS TOOLS



SWH65 - Single Wheel Hoe \$189.99

The Hoss Single Wheel Hoe is the ultimate garden tool, saving you time and energy in your vegetable garden. Based on a centuries-old design, the Hoss Wheel Hoe is built to last a lifetime.

Includes set of 3 Cultivator Teeth



LDW406 - Double Wheel Hoe \$229.99

The Hoss Double Wheel Hoe has an extra wheel which provides added stability and enables you to straddle the row when plants are small, so you can weed both sides of the row in one pass.

Includes set of 4 Cultivator Teeth



SP301 - Wheel Hoe Sweeps \$49.99

The Sweeps are our most versatile attachment for the Hoss Wheel Hoe. They provide shallow cultivation to prevent feeder root damage while eliminating weeds from your garden. Great for weed prevention.



HN5HM5 - Plow Set \$49.99

Use the Plow attachment(s) for the Hoss Wheel Hoe to make furrows for planting, forming beds by hilling or throwing dirt to plants to provide support. Use individually or as a set.



Oscillating Hoe

The Hoss Oscillating Hoe is the ultimate garden weeding tool for your garden. Easily attach to a Hoss Wheel Hoe and begin controlling the weeds with the sharpened, spring steel blade that oscillates forward and backward.

6" HOH6 \$27.99

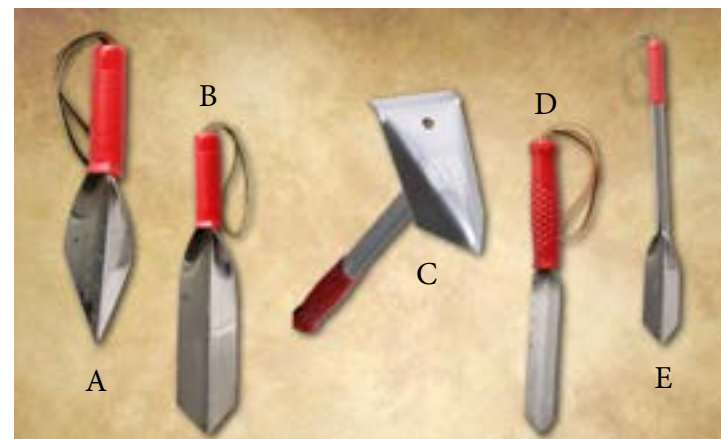
8" HOH8 \$29.99

12" HOH12 \$34.99

WILCOX TOOLS

Wilcox All Pro Tools

Sturdy, one piece design. Sharp cutting edges for hard soil and pointed tip for digging.



A GS03 - 10" Pointed Trowel \$12.98
2 1/2"x10"

B GS405 - 12" Digging Trowel \$12.45
2"x12"

C GS409 - All Pro Hand Joe \$18.49
3"x12"

D GS401 - 12" Long Handle Trowel \$10.98
1 1/4"x12"

E GS407 - 22" Extra Long Trowel \$16.98
3"x22"

Not pictured:

GS400 - 9" Digging Trowel \$8.98
1 1/2"x9"

GS402 - 10" Digging Trowel \$11.49
2"x10"

GS409 - 14" Digging Trowel \$13.98
3"x14"

A GS205 - Deluxe Knee Cushion \$5.50
Foam, light weight with a cut out handle for easy carrying. Great for gardening.

B GS157 - Seed Master \$6.99
Dial handle vibrator to singulate seeds. Includes four different seed plates.

C GS220 - Nitrile Touch Glove \$5.99
Breathable nylon liner with tough but thin nitrile coating for excellent dexterity. XS-XL (colors vary)

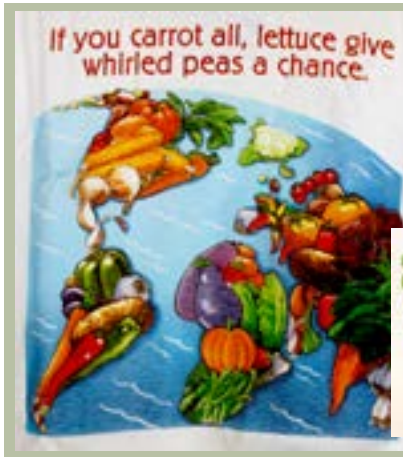
D GS160 - Mini Seeder \$4.99
Great for singulating small seeds.

E GS158 - Seed Sower \$2.99
Has an adjustable outlet for different seed sizes.

F GS207 - light weight hand pruners \$9.00
5/8" cutting capacity. 7 1/2" overall length.



MUST HAVES!



Irish Eyes T-Shirt \$18.00
Organic Cotton

Front:
"Unbeetable Quality"

Back:
"If you carrot all, lettuce give whirled peas a chance"



TSW - White: S-2XL
TSN - Natural: M-2XL

GS332 - Irish Eyes Garden Planner \$2.50

Shows proper indoor and outdoor planting times relative to Spring and Fall frost dates for 22 common garden vegetables. Includes indoor seeding dates. Unique chart presents gardening events in a "time phased" format to see entire growing and harvesting period. Front shows Spring season and flip side acts as a guide for Fall gardeners. Slide portion provides critical planting information such as: Quantity of seed or plants required to make a 10' row (in ounces), planting depth (in inches), and distance between rows (in inches).



GS147 - Maxi Pots 10/\$1.50



Seedling Plug Trays 5/\$3.00

Three sizes available for starting seeds.

GS115 - 128 cells GS116 - 162 cells GS117 - 200 cells

More seed starting products available.

Please email marketgrower@irisheyesgardenseeds.com for current availability.

THE ROO

NEW!! At Irish Eyes Garden Seeds
Exclusive Distributor



Industrial strength cotton
Water resistant nylon lines the pouch to keep you dry
Self adjusting straps for one size fits all
Machine washable

Enjoy hands-free gardening and harvesting with the Roo & Joey aprons. Simply fill the pouch with your weeds, deadheads or harvested fruits and veggies, and release the ropes to empty whatever you have collected. Additional pockets for tools, shears & phones.

Joey \$28.99

Roo \$29.99



To order email marketgrower@irisheyesgardenseeds.com Questions? Call us at 509-933-7150

Email marketgrower@irisheyesgardenseeds.com for pricing and larger quantities.



OBE163P - Hannah Garbanzo Bean

CODE	BEANS
Minimum order: 1 pound - email for larger sizes	
OBE101P	OG Midori Giant Edamame
OBE108P	OG Kentucky Wonder Pole Bean
OBE110P	OG Contender Bush Bean
OBE124P	OG Blue Lake 274 Bush Bean
OBE125P	OG California White Kidney Bea
OBE126P	OG California Light Red Kidney
OBE128P	OG Blue Lake FM-1K Pole Bean
OBE129P	OG Tendergreen Bush Bean
OBE136P	OG Provider Bush Bean
OBE140P	OG Royalty Purple Pod Bush Bea
OBE142P	OG Dragon's Tongue Wax Bush
OBE144P	OG Golden Wax Bush Bean
OBE145P	OG Sweet Lorane Fava Bean
OBE150P	OG Indian Woman Yellow Bush Bean
OBE152P	OG Norwegian Brown Bush Bean
OBE162P	OG Kabuli Black Garbanzo Bean
OBE163P	OG Hannah Garbanzo Bean
OBE166P	OG Nodak Pinto Bean
OBE182P	OG Scarlet Runner Pole Bean
OBE184P	OG Windsor Fava Bean
OBE185P	OG Gourmet Bean Blend
OBE200P	OG Early Bountiful Bush Bean

CODE	BEEETS
Minimum order: 1 pound - email for larger sizes	
OBE100P	OG Gourmet Beet Blend
OBE102P	OG Detroit Dark Red Beet
OBE103P	OG Chioggia Beet
OBE104P	OG Cylindra Beet
OBE105P	OG Bulls Blood Beet
OBE106P	OG Golden Beet
OBE107P	OG Early Wonder Tall Top Beet

CODE	BROCCOLI
Minimum order: 1/4 pound - email for larger sizes	
OBR108P	OG DeCiccio Broccoli
OBR109P	OG Sprouting Calabrese Broccoli
OBR112P	OG Waltham 29 Broccoli

CODE	CABBAGE
Minimum order: 1/4 pound - email for larger sizes	
OCA200P	OG Golden Acre Cabbage
OCA201P	OG Columbia Cabbage
OCA202P	OG Red Acre Cabbage
OCA218P	OG Red Express Cabbage



CODE	CARROTS
Minimum order: 1 ounce - email for larger sizes	
OCA119P	OG Lunar White Carrot
OCA120P	OG Black Spanish Carrot
OCA162P	OG Danvers Carrot
OCA165P	OG Little Finger Carrot
OCA166P	OG Scarlet Nantes Carrot
OCA190P	OG Chantenay Carrot
OCA192P	OG Atomic Red Carrot
OCA193P	OG Cosmic Purple Carrot
OCA194P	OG Dragon Carrot
OCA195P	OG Nutri-Red Carrot
OCA196P	OG Yellow Solaris Carrot
OCA198P	OG Gourmet Carrot Blend



OBE106P - Golden Beet

CODE	CAULIFLOWER
Minimum order: 1/4 pound - email for larger sizes	
OCA139P	OG Snowball Improved Cauliflower



OCO224P - Painted Mountain Corn

4 TIPS

To Expand Your Sales

By Selling Seedlings at the Farmer's Market

1) *Sell the basics*

People love growing their basic vegetables in their home gardens. Try displaying tomatoes, herbs and squash.

2) *Variety is key*

Along with the basics, expand into the new territory for your customers' gardens. Try eggplant, kohlrabi and watermelon.

3) *Organic Heirlooms*

Heirloom and organic varieties are all everyone is talking about. Cater to your market and see your seedlings sell!

4) *Be Creative*

Creative displays generate better sales. Use props or make designs with your displays to catch attention from potential customers. make yourself stand out.



CODE	CELERY
Minimum order: 1/4 pound - email for larger sizes	
OCE101P	OG Tall Utah Celery

CODE	CORN
Minimum order: 5 pounds - email for larger sizes	
OCO124P	OG Fisher's Earliest Corn
OCO125P	OG Midnight Snack Corn
OCO134P	OG Minnesota 13 Dent Corn
OCO164P	OG Strawberry Popcorn
OCO191P	OG Painted Hills Sweet Corn
OCO210P	OG Early Golden Bantam Corn
OCO212P	OG Ashworth Sweet Corn
OCO218P	OG Tom Thumb Popcorn
OCO223P	OG Dakota Ivory Corn
OCO224P	OG Painted Mountain Ornamental
OCO227P	OG Mandan Blue Corn
OCO256P	OG Luscious F-1 Corn
OCO257P	OG Spring Treat F-1 Corn
OCO259P	OG Sugar Pearl F-1 Corn
OCO401P	OG Blue/Yellow Clarage Corn
CO124P	Fisher's Earliest Corn
CO134P	Minnesota 13 Dent Corn
CO212P	Bodacious F-1 Corn
CO230P	Earlivee F-1 Corn
CO235P	Frosty F-1 Corn
CO247P	Sugar Buns F-1 Corn
CO250P	Quickie F-1 Corn
CO252P	Trinity F-1 Corn
CO253P	Buttergold Corn
CO254P	Incredible F-1 Corn
CO401P	Ohio Blue Clarage Corn

CODE	COVER CROPS
Minimum order: 50 pounds	
CC101	Austrian Winter Pea
CC111	Buckwheat
CC121	Rapeseed
CC141	Hairy Vetch
CC151	Winter Rye
CC201	Alfalfa
CC221	Crimson Clover
CC231	White Dutch Clover
CC241	Yellow Clover

CODE	CUCUMBERS
Minimum order: 1/4 pound - email for larger sizes	
OCU120P	OG Lemon Cucumber
OCU121P	OG Straight 8 Cucumber
OCU122P	OG Tendergreen Cucumber
OCU124P	OG Marketmore 76 Cucumber
OCU127P	OG Early Fortune Cucumber
OCU142P	OG Armenian Cucumber
OCU146P	OG Spacemaster 80 Cucumber
OCU155P	OG Suyo Long Cucumber
OCU162P	OG Burpless Muncher Cucumber
OCU163P	OG County Fair Cucumber
OCU165P	OG Homemade Pickles Cucumber

CODE	EGGPLANT
Minimum order: 1 ounce - email for larger sizes	
OEG104P	OG Snowy Eggplant
OEG105P	OG Black Beauty Eggplant
OEG106P	OG Long Purple Eggplant

CODE	GOURDS
Minimum order: 1 pound - email for larger sizes	
OGO101P	OG Ornamental Mix Gourd
OGO107P	OG Bottle/Birdhouse Gourd



CODE	GREENS
Minimum order: 1 ounce - email for larger sizes	
OGR114P	OG Chinese Pak Choi
OGR115P	OG Baby Pak Choi
OGR118P	OG Chicory
OGR200P	OG Tatsoi Mustard
OGR300P	OG Mibuna Mustard
OGR315P	OG Arugula
OGR316P	OG Batavian Endive
OGR317P	OG Tres Fine Endive
OGR322P	OG Orach
OGR431P	OG Mizuna Mustard
OGR432P	OG Red Giant Mustard



CODE	HERBS
Minimum order: 1 ounce - email for larger sizes	
OHE101P	OG Sacred Basil
OHE105P	OG Genovese Basil
OHE106P	OG Lemon Basil
OHE107P	OG Italian Large Leaf Basil
OHE109P	OG Dark Opal Basil
OHE110P	OG Chamomile
OHE112P	OG Lemon Balm

OHE115P	OG Fennel
OHE119P	OG Borage
OHE123P	OG Catnip
OHE125P	OG Watercress
OHE130P	OG Cinnamon Basil
OHE161P	OG Chives
OHE171P	OG Cilantro
OHE207P	OG Mammoth Dill
OHE208P	OG Bouquet Dill
OHE241P	OG Greek Oregano
OHE319P	OG Italian Giant Flat Parsley
OHE321P	OG Moss Curled Parsley
OHE331P	OG Poppy: Bread
OHE411P	OG Sage
OHE441P	OG Thyme
OHE447P	OG Calendula: Resina

CODE	KALE
Minimum order: 1/4 pound - email for larger sizes	
OKA451P	OG Lacinato Kale
OKA457P	OG White Russian Kale
OKA516P	OG Red Ursa Kale
OKA519P	OG Red Russian Kale

CODE	KOHLRABI
Minimum order: 1 ounce - email for larger sizes	
OKO100P	OG Early Purple Vienna Kohlrabi

Email marketgrower@irisheyessgardenseeds.com for pricing and larger quantities.

CODE	LEEK & ONIONS
Minimum order: 1 ounce - email for larger sizes	
OON720P	OG Evergreen Bunching Onion
OON710P	OG Borrettana Cipollini Onion
OLL731P	OG King Richard Leek
OON301P	OG Texas Early Grano Onion
OON701P	OG Walla Walla Onion



CODE	LETTUCE
Minimum order: 1 ounce - email for larger sizes	
OLE100P	OG Tricolored Romaine Blend
OLE101P	OG Mild Mesclun Lettuce Mix
OLE103P	OG Freckles Lettuce
OLE104P	OG Black Seeded Simpson Lettuce
OLE106P	OG Rouge D'Hiver Lettuce
OLE107P	OG Royal Oakleaf Lettuce
OLE109P	OG Green Deer Tongue Lettuce
OLE110P	OG Red Deer Tongue Lettuce
OLE114P	OG Speckles Lettuce
OLE116P	OG Little Gem Lettuce
OLE117P	OG Lolla Rossa Darkness Lettuce
OLE119P	OG Cardinale Lettuce
OLE120P	OG Iceberg Lettuce
OLE132P	OG Parris Island Cos Lettuce
OLE133P	OG Blushed Butter Cos Lettuce
OLE135P	OG Yugoslavian Red Lettuce
OLE137P	OG Buttercrunch Bibb Lettuce
OLE138P	OG Blushed Butter Oak Lettuce
OLE139P	OG Devils Tongue Lettuce
OLE140P	OG Outredgeous Lettuce
OLE142P	OG Red Salad Bowl Lettuce
OLE143P	OG Green Salad Bowl Lettuce
OLE201P	OG Spicy Mesclun Lettuce Mix
OLE401P	OG Gourmet Lettuce Mix

CODE	MELONS
Minimum order: 1 pound - email for larger sizes	
OME200P	OG Dixie Queen Watermelon
OME201P	OG Minnesota Midget Melon
OME202P	OG Hales Best Jumbo Melon
OME203P	OG Crimson Sweet Watermelon
OME204P	OG Hearts of Gold Melon
OME205P	OG Rocky Ford Honeydew
OME206P	OG Tendersweet Orange Watermelon
OME207P	OG Charentais Muskmelon
OME223P	OG Blacktail Mountain Watermelon
OME229P	OG Ha'ogen Melon
OME235P	OG Sungold Melon
OME245P	OG Sweet Summer Mix Melon
OME310P	OG Cream of Saskatch. Watermelon
OME317P	OG Moon & Stars Red Watermelon
OME318P	OG Moon & Star Yellow Watermelon
OME320P	OG Sugar Baby Watermelon
OME399P	OG Delicious 51 Melon
OME400P	OG Honey Rock Melon
OME641P	OG Early Moonbeam Watermelon
OME642P	OG Sweet Siberian Watermelon

CODE	NASTURTIIUM
Minimum order: 1/4 pound - email for larger sizes	
FL106P	Nasturtium: Scarlet Gleam
FL107P	Nasturtium: Empress of India
FL108P	Nasturtium: Tom Thumb
FL129P	Nasturtium: Tall Trailing
FL226P	Nasturtium: Alaska
FL228P	Nasturtium: Dwarf Jewel Mix



CODE	OKRA
Minimum order: 1 ounce - email for larger sizes	
OKA100P	OG Cow Horn Okra

CODE	PARSNIP
Minimum order: 1 ounce - email for larger sizes	
OPA101P	OG Turga Parsnip

CODE	PEAS
Minimum order: 5 pounds - email for larger sizes	
OPE101P	OG Mammoth Melting Pea
OPE102P	OG Progress #9 Shell Pea
OPE116P	OG Sugar Ann Snap Pea
OPE117P	OG Cascadia Pea Snap Pea
OPE118P	OG Taiwan Sugar Pea
OPE119P	OG Sugar Daddy Pea
OPE128P	OG Yellow Sugar Snap Pea
OPE214P	OG Green Arrow Shell Pea
OPE219P	OG Novella II Shell Pea
OPE230P	OG Oregon Sugar Pod II Snow Pea
OPE250P	OG Sugar Snap Pea

CODE	PEPPERS
Minimum order: 1 ounce - email for larger sizes	
OPP101P	OG Sweet Pepper Combo
OPP102P	OG Hot Pepper Combo
OPP103P	OG Marconi Red Pepper
OPP107P	OG Sweet Chocolate Pepper
OPP110P	OG Golden Greek Pepperoncini
OPP115P	OG Sweet Pickle Pepper
OPP120P	OG California Wonder 300 Pepper
OPP121P	OG Golden Cal Wonder Pepper
OPP122P	OG Purple Cayenne Pepper
OPP123P	OG Diamond Bell Pepper
OPP124P	OG Italian Pepperoncini
OPP125P	OG Poinsettia Pepper
OPP130P	OG Orange Sun Pepper
OPP134P	OG Purple Beauty Pepper
OPP205P	OG Karlo Pepper
OPP210P	OG Hungarian Wax Pepper
OPP213P	OG Early Jalapeño Pepper
OPP232P	OG Cayenne Pepper
OPP244P	OG Habanero Orange Pepper
OPP245P	OG Black Hungarian Wax Pepper



CODE	PUMPKINS
Minimum order: 1 pound - email for larger sizes	
OPU210P	OG Sugar Pie Pumpkin
OPU214P	OG Jack-O-Lantern Pumpkin
OPU219P	OG Howden Pumpkin
OPU220P	OG Big Max Pumpkin
OPU230P	OG Cinderella Pumpkin
OPU256P	OG Casper Pumpkin
OPU257P	OG Lady Godiva Pumpkin



CODE	SQUASH
Minimum order: 1 pound - email for larger sizes	
OSQ100P	OG Table King Acorn Squash
OSQ101P	OG Black Beauty Zucchini
OSQ105P	OG Hopi Orange Squash
OSQ106P	OG Yellow Zucchini Squash
OSQ107P	OG Reba Acorn Squash
OSQ108P	OG Table Gold Acorn Squash
OSQ109P	OG Cocozelle Squash
OSQ117P	OG Early Butternut Squash
OSQ118P	OG New England Blue Hubbard
OSQ120P	OG Spaghetti Squash
OSQ124P	OG Sweetmeat Squash
OSQ126P	OG Honeyboat Squash
OSQ132P	OG Early Straightneck Squash
OSQ133P	OG Table Queen Bush Squash
OSQ136P	OG Early Crookneck Squash
OSQ144P	OG Dark Green Zucchini
OSQ210P	OG Delicata Squash
OSQ212P	OG Gold Nugget Squash
OSQ221P	OG Bitterroot Buttercup Squash
OSQ225P	OG Ronde De Nice Squash
OSQ300P	OG Baby Green Hubbard Squash

Email marketgrower@irisheyesgardenseeds.com for pricing and larger quantities.



CODE	QUINOA
Minimum order: 1 ounce - email for larger sizes	
OQU101P	OG Red Faro Quinoa
OQU102P	OG Rainbow Quinoa



CODE	RADISHES
Minimum order: 1 pound - email for larger sizes	
ORA100P	OG Champion Radish
ORA102P	OG Cherry Belle Radish
ORA104P	OG Pink Beauty Radish
ORA105P	OG Purple Plum Radish
ORA106P	OG German Giant Radish
ORA107P	OG Watermelon Radish
ORA112P	OG Sparkler Radish
ORA114P	OG Daikon Radish
ORA121P	OG Radish Blend
ORA122P	OG French Breakfast Radish
ORA128P	OG White Icicle Radish
ORA130P	OG White Beauty Radish
ORA132P	OG Easter Egg II Radish

CODE	RUTABAGA
Minimum order: 1 pound - email for larger sizes	
ORU102P	OG Joan Rutabaga
ORU103P	OG Nadmorska Rutabaga

CODE	SPINACH
Minimum order: 1 pound - email for larger sizes	
OSP100P	OG Bloomsdale Spinach
OSP103P	OG Corvair Spinach
OSP117P	OG Everlasting Spinach
OSP118P	OG Tyee Spinach

CODE	SWISS CHARD
Minimum order: 1 pound - email for larger sizes	
OSC100P	OG Rainbow Blend Swiss Chard
OSC101P	OG Fordhook Giant Swiss Chard
OSC112P	OG Ruby Red Swiss Chard
OSC114P	OG Yellow Swiss Chard
OSC116P	OG Orange Swiss Chard

CODE	SUNFLOWERS
Minimum order: 1/4 pound - email for larger sizes	
FL177P	Sunflower: Sungold
FL231P	Sunflower: Italian White
FL304P	Sunflower: Mammoth
FL306P	Sunflower: Lemon Queen
FL310P	Sunflower: Autumn Beauty
OFL231P	OG Sunflower: Italian White
OFL276P	OG Sunflower: Teddy Bear Dwarf
OFL304P	OG Sunflower: Black Mammoth
OFL306P	OG Sunflower: Lemon Queen
OFL307P	OG Sunflower: Velvet Queen
OFL310P	OG Sunflower: Autumn Beauty
OFL312P	OG Sunflower: Ornamental Mix
OFL340P	OG Sunflower: Redsun
OFL342P	OG Sunflower: Sunspot



Email marketgrower@irisheyesgardenseeds.com for pricing and larger quantities.



OTT400P - Yellow Pear Tomato

CODE	TOMATOES
Minimum order: 1 ounce - email for larger sizes	
OTT112P	OG Delicious Tomato
OTT114P	OG Black Russian Tomato
OTT117P	OG Fireworks Tomato
OTT120P	OG Big Rainbow Tomato
OTT124P	OG Green Husk Tomatillo
OTT132P	OG Garden Peach Tomato
OTT136P	OG Gardener's Delight Tomato
OTT160P	OG Gold Nugget Tomato
OTT184P	OG Green Zebra Tomato
OTT208P	OG Lime Green Salad Tomato
OTT218P	OG Long Keeper Tomato
OTT229P	OG Polar Beauty Tomato
OTT230P	OG Polar Star Tomato
OTT264P	OG Bonny Best Tomato
OTT296P	OG Legend Tomato
OTT300P	OG Willamette Tomato
OTT306P	OG Pruden's Purple Tomato
OTT326P	OG Rocket Tomato
OTT332P	OG Sasha's Pride Tomato
OTT336P	OG Sausage Tomato
OTT340P	OG Siberia Tomato
OTT347P	OG Siletz Tomato
OTT348P	Silvery Fir Tree Tomato
OTT352P	OG Stupice Tomato
OTT356P	OG Sub Arctic Plenty Tomato
OTT368P	OG Super Italian Paste Tomato
OTT372P	OG Sweetie Tomato
OTT400P	OG Yellow Pear Tomato
OTT401P	OG Roma Tomato
OTT436P	OG Toma Verde Tomatillo
OTT572P	OG Saucy Paste Tomato

CODE	TOMATOES
Minimum order: 1 ounce - email for larger sizes	
OTT008P	OG Alaskan Fancy Tomato
OTT016P	OG Amish Paste Tomato
OTT037P	OG Early Wonder Tomato
OTT042P	OG Bellstar Tomato
OTT052P	OG Black From Tula Tomato
OTT056P	OG Black Krim Tomato
OTT080P	OG Brandywine - Red Tomato
OTT084P	OG Brandywine - Yellow Tomato
OTT092P	OG Early Bush Beefsteak Tomato
OTT100P	OG Cherokee Purple Tomato
OTT102P	OG Heirloom Tomato Blend
OTT106P	OG Cherry Baby Tomato
OTT107P	OG Lemon Drop Tomato
OTT110P	OG Pineapple Tomato

CODE	TURNIPS
Minimum order: 1/4 pound - email for larger sizes	
OTU100P	OG Purple Top White Globe Turn
OTU102P	OG Golden Globe Turnip



Be Creative

Creative displays generate better sales. Use props or make designs with your displays to catch attention from potential customers. Make yourself stand out.
Expand your sales! See page 31



MEET THE STAFF



Greg: Owner & CEO



Alexa: General Manager, HR, Logistics, Accounts Manager, Accounting, Buyer, Inventory Manager & Trade Show Representative



Alicia: Office Manager, Warehouse Manager, Website Manager, Print Marketing, Print Design, Trial Garden, Donation Accounts, & Trade Show Representative



Robin: Market Grower Accounts, Wholesale Accounts, Photography, Digital Marketing, Digital Design, Trial Garden & Trade Show Representative



Brittany: Customer Service Representative, Trial Garden & Writer



THANK YOU!



We know you work hard.
Thank you for providing your services to your local communities.
We're here because of you.



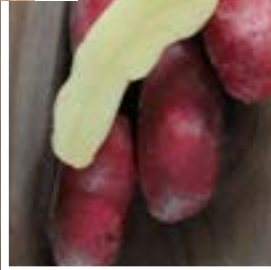
Agata



Amarillo Moon



The Roo & Joey Aprons



Cecile



Malou

New
Items!



5045 Robinson Canyon Road, Ellensburg, WA 98926
Pricing and availability subject to change without notice.
Call or email for current pricing and availability.